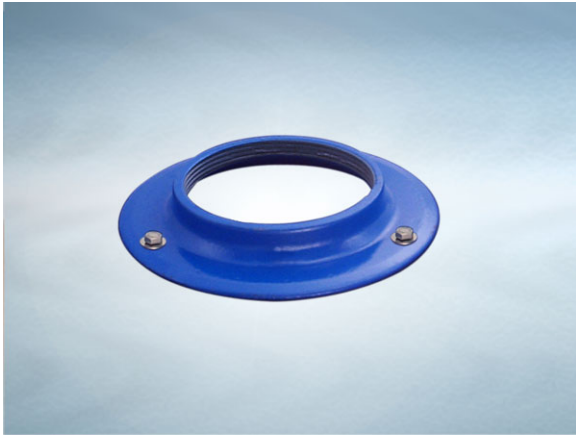


Product Details

U208 Extension

Technical Data

**Dimensions:**

188 dia. overall size

25 - Overall Height

25 to 25 - min/max height increase

Connection - extension bolts onto B1, B2, G2-G10 series bodies

Materials - Cast iron, lacquered

Weight - 0.9 kg

General Description:

Cast Iron Vari-Level Extension (Bolt-on extension). Used to increase the height between the top of a body and finished floor level.

Materials:

Cast Iron - BS EN 1561: Used for bodies, membrane clamping collars, spigot adaptors and accessories such as extensions. A widely used metal in the drainage industry, its resistance to corrosion permits extended use under extreme conditions. Castings are coated with a high grade lacquer paint to provide internal and external surface coverage. Paint will gradually wear off and is replaceable; oxidation (surface rusting) is a natural process which does not weaken the material. A zinc anti-corrosion coating is applied to certain castings by sherardizing.

All dimensions are in millimetres unless stated. In line with general practice all dimensions shown are nominal.

Wade International

Third Avenue, Halstead, Essex, CO9 2SX.

Telephone: +44 (0)1787 475151

Fax: +44 (0)1787 475579

e-mail: wadetech@alumascwms.co.uk

website: <https://www.alumascwms.co.uk/brands/wade/>

Typical Installation for U208:

Note: This illustration may show a similar Wade Product - it is intended to show the general installation type only.

